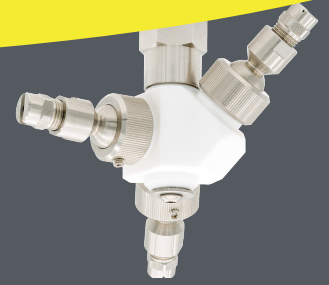


GyraFlex

Operating & Maintenance

Manual



The GyraFlex uses adjustable ball joints to aim the spray pattern and control rotation speed. Correct adjustment ensures maximum cleaning power instead of wasted energy in rotation. Each model has a defined 0-setting (starting position). It is essential that the GyraFlex rotates **slowly**. This ensures that max. energy remains available for cleaning power and spray reach. We recommend a rotation speed of approximately **30 rotations per minute** (one rotation every two seconds).

Settings



Model Triple A

0-setting:

- one nozzle 45° upward
- one nozzle 45° downward
- one nozzle 90° to the body



Model V

Two ball joints pointing upward

0-setting: both nozzles 45° upward



Model M

Two ball joints angled downward

0-setting: both nozzles 45° downward



Model Z

Two ball joints placed at an angle

0-setting: nozzles at 45° upward and 45° downward

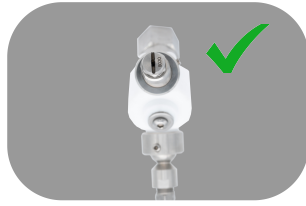
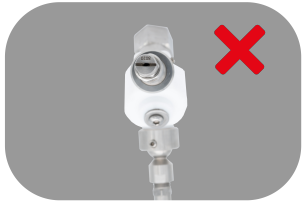


Model T

Two opposite ball joints

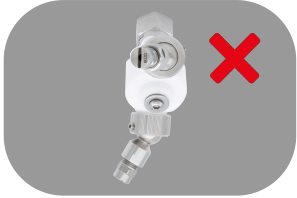
0-setting: nozzles in line, pointing in opposite directions, 90° to the shaft

Adjusting



1

Always make sure the flat fan nozzles are pointing vertically. This will ensure optimal spray coverage.



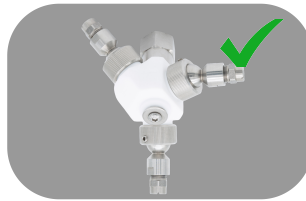
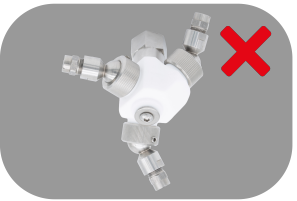
2

Do not turn the nozzles in the same direction, they will cancel each other out and the GyraFlex will not rotate.



3

Do not use all nozzles to determine the rotation speed. The GyraFlex will be rotating too fast. Like in the second picture: use only one of the nozzles to determine the rotation speed.



4

First picture: all three nozzles are used to start the rotation speed. This will make the GyraFlex rotate too fast. It is also harder to reach optimal rotation speed. Like in the second picture: only use the middle nozzle to determine the rotation speed.



When looking at the bottom: make sure the GyraFlex turns clockwise.

Cleaning procedure

1 Remove the top bolt and washer using a hex (Allen) key.

2 Pull the tip off the shaft and inspect for fouling.

3 Visually inspect the balls and nozzles for clogging.

4

If fouled:

- Remove the lock nut.
- Take out the ball + nozzle assembly.
- Clean with water and/or air.
- Do not use sharp objects to unclog nozzles (can cause damage).

5

Reassemble carefully:

- Place the balls and nozzles back into the joints.
- Re-tighten lock nuts without damaging the synthetic threads.
- Set the nozzles back to the correct positions.

Anro Spray Solutions B.V.

Arnoudstraat 22
2182 DZ Hillegom
The Netherlands

+31 (0) 252 25 55 75
info@anro.eu
anro.eu



Anro.eu